

31/03/2026

Key Presentation Q1 2026

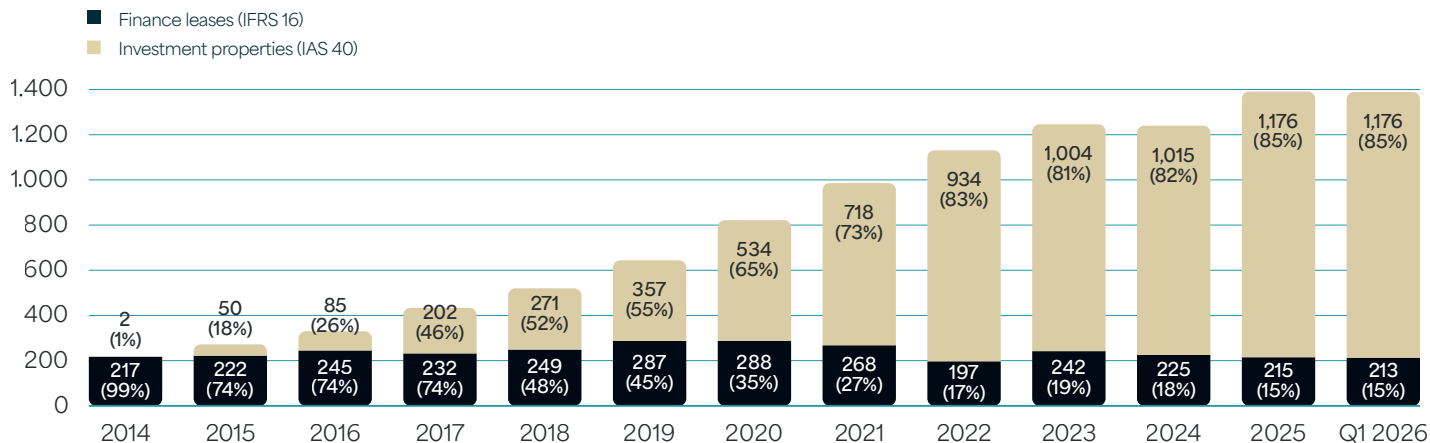
**Building a Caring
Future Together**



Some key figures as at 31/03/2026



Accelerated growth in the fair value of the portfolio over recent years, in € million



Who we are

Care Property Invest, founded in 1995 under the name Serviceflats Invest, was the first Belgian publicly listed investor specialising in healthcare real estate (RREC).

Building on the expertise we gained from delivering 1,988 service flats on the public market, we now invest in high-quality real estate solutions **for seniors and people with disabilities.**

We acquire, construct and renovate care properties and support care operators in developing their projects in the most efficient way and at the best possible cost.

We do this in the most sustainable way, supported by a solid organisation and always fully tailored to the needs of the end users. In this way, we ensure future residents enjoy both **care security and living comfort.**

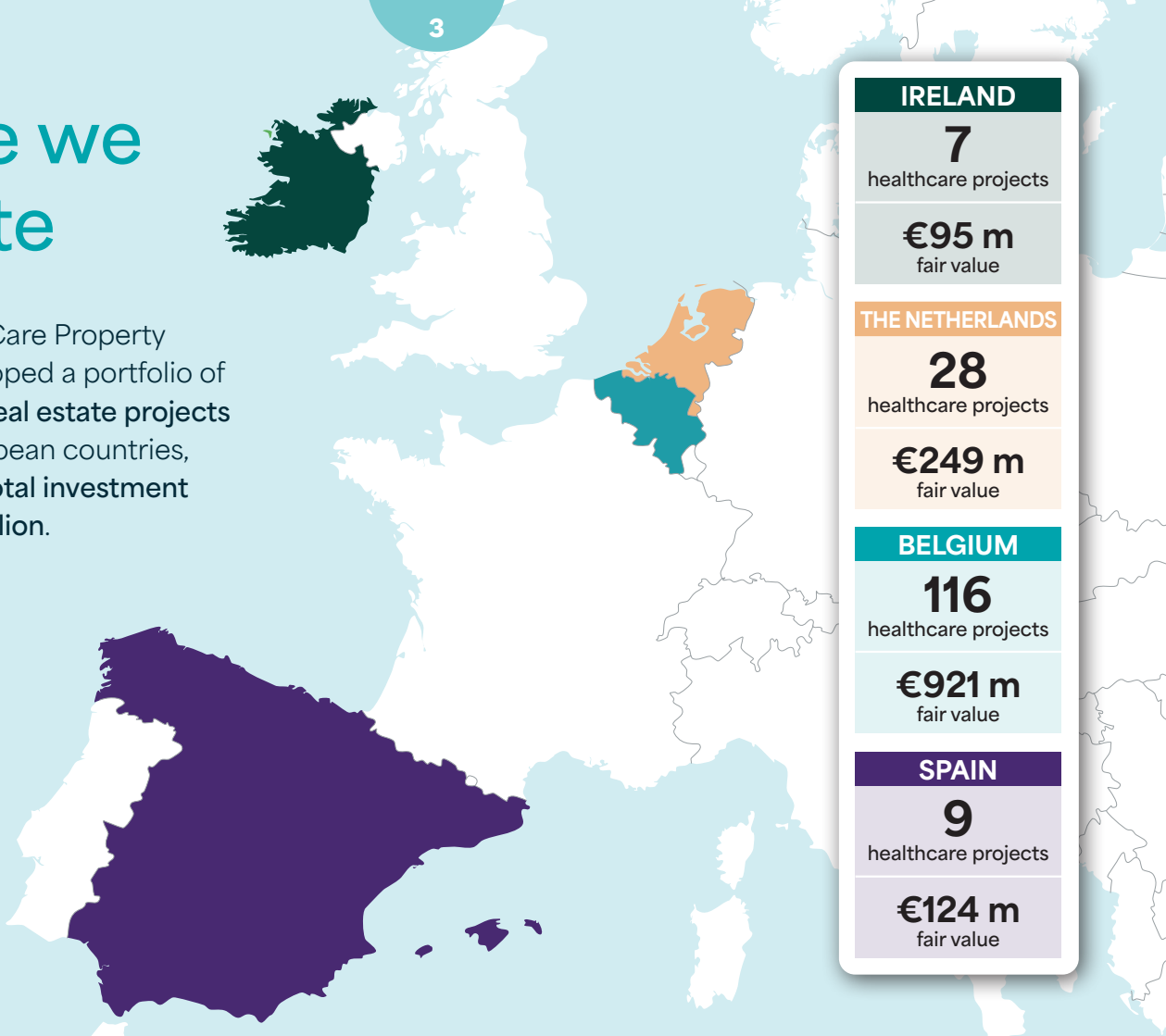
At the same time, we want to ensure that our shareholders realise the returns they deserve. Care Property Invest aims for an **attractive long-term return.**

Because our portfolio consists entirely of healthcare real estate, shareholders benefit from a **reduced withholding tax of 15%.**



Where we operate

In recent years, Care Property Invest has developed a portfolio of **160 healthcare real estate projects** across four European countries, representing a **total investment value of €1.39 billion**.



IRELAND

7

healthcare projects

€95 m
fair value

THE NETHERLANDS

28

healthcare projects

€249 m
fair value

BELGIUM

116

healthcare projects

€921 m
fair value

SPAIN

9

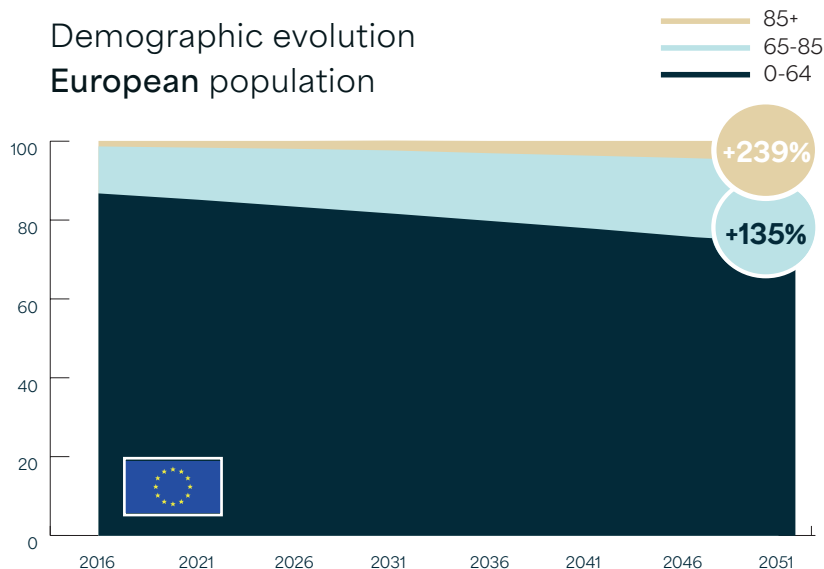
healthcare projects

€124 m
fair value

Europe is ageing

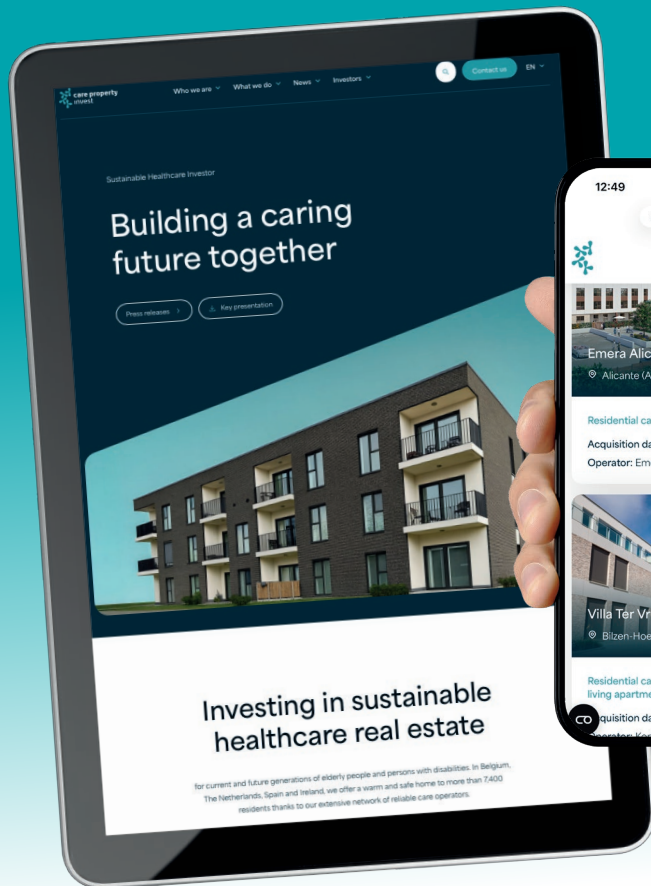
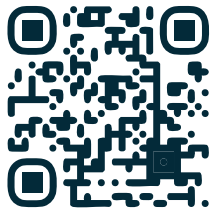
Europe is facing a major demographic challenge. In the decades ahead, the number of elderly people requiring care – and thus the demand for high-quality care infrastructure – will continue to rise sharply. Care Property Invest aims to provide an appropriate response to this growing need.

Demographic evolution
European population



Care Property Invest supports initiators in developing their plans efficiently and at the best possible terms. In doing so, we aim to guarantee future residents care security and living comfort, while ensuring that our shareholders realise the returns they deserve.

Discover our new website



www.carepropertyinvest.be



Sustainable strategy, sustainable growth

Our strategy is built on sustainability – not only in our internal operations and project development, but also in the long-term growth of our share.

In September 2025, the Company received an **EPRA sBPR Gold Award** for the fourth consecutive year for its sustainability reporting.



Public limited company
Horstebaan 3, 2900 Schoten, Belgium
BE 0456 378 070
Public RREC under Belgian Law

Contact

Filip Van Zeebroeck (CFO)
filip.vanzeebroeck@carepropertyinvest.be
+32 (0)3 222 94 94

www.carepropertyinvest.be



Share data

Listing	Euronext - Comp. B.
ISIN	BE 0974 273 055
ICB	8673 - Residential REIT's
Bloomberg	CPINV BB
Shares issued	42,272,952
Share price	€12.26 (as at 31/03/2026)
Market cap.	€518 million (as at 31/03/2026)

